



This document describes the required steps to install a fresh copy of Solaris 10 on the SunFire v120. I've outlined this cheat-sheet with values of my test lab. This should work on other Sun Hardware with LOM interface as well. If you have any files of value and you remember a password to logon, copy them off, before starting the setup. This guide will completely destroy anything on the SunFire. You can use this document to install Solaris 10, even if you don't remember the root password anymore.

## Preparation

1. Have a PC or Notebook ready with a terminal program. If you don't remember the root password, make sure, your terminal program can send "breaks"
2. Connect Console Cable with LOM (serial A) and your notebook
3. Start terminal program on the notebook
4. Power on the SunFire and insert Solaris 10, CD #1

## Root Password is known

After the SunFire has been boot up, login as `root` and shut the system down to the firmware prompt:

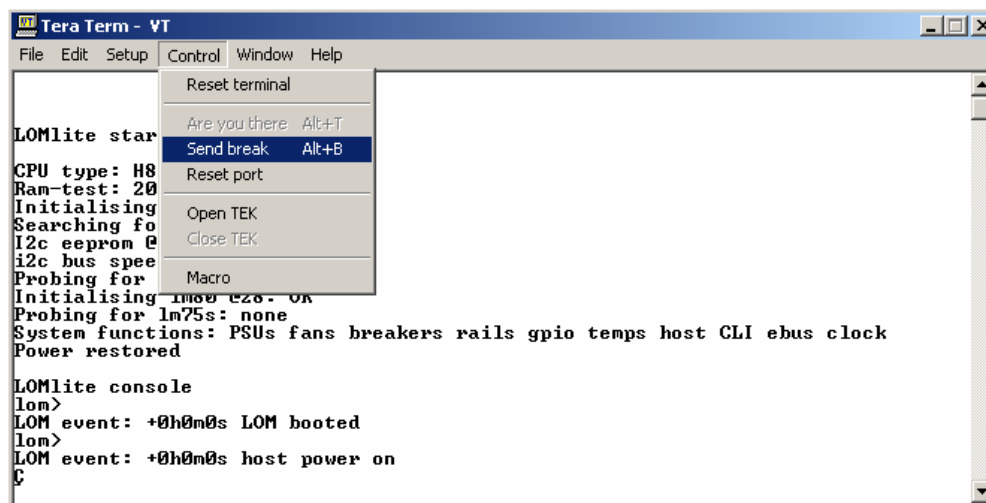
```
# init 0
```

This will get you to the firmware prompt. Continue with the step "**Installation**"

## Root Password is unknown

**Note:** To run this procedure, you need to have a "send break" capable terminal program. I used TeraTerm, which can send the break signal.

Power on and send a couple of **breaks**.



### DISCLAIMER

This Technical Tip or TechNote is provided as information only. I cannot make any guarantee, either explicit or implied, as to its accuracy to specific system installations / configurations. Readers should consult each Vendor for further information or support.

Although I believe the information provided in this document to be accurate at the time of writing, I reserve the right to modify, update, retract or otherwise change the information contained within for any reason and without notice. This technote has been created after studying the material and / or practical evaluation by myself. All liability for use of the information presented here remains with the user.

## Installation

```
# init 0
# svc.startd: The system is coming down. Please wait.
bsvc.startd: 70 system services are now being stopped.
Apr 25 14:49:14 sunfire rpcbind: rpcbind terminating on signal.
svc.startd: The system is down.
syncing file systems... done
Program terminated
ok boot cdrom - nowin
Res
LOM event: +0h16m4s host resetting ...
```

```
∅
Sun Fire V120 (UltraSPARC-IIe 648MHz), No Keyboard
OpenBoot 4.0, 1024 MB memory installed, Serial #51903644.
Ethernet address 0:3:ba:3e:a7:2b, Host ID: 83263943.
```

```
Executing last command: boot cdrom - nowin
Boot device: /pci@1f,0/pci@1,1/ide@d/cdrom@0,0:f File and args: - nowin
SunOS Release 5.10 Version Generic_118822-25 64-bit
Copyright 1983-2005 Sun Microsystems, Inc. All rights reserved.
Use is subject to license terms.
Configuring devices.
SUNW,eri0 : 100 Mbps full duplex link up
Using RPC Bootparams for network configuration information.
Attempting to configure interface eril...
Skipped interface eril
Attempting to configure interface eri0...
Skipped interface eri0
```

Select a Language

0. English
1. French
2. German
3. Italian
4. Japanese
5. Korean
6. Simplified Chinese
7. Spanish
8. Swedish
9. Traditional Chinese

Please make a choice (0 - 9), or press h or ? for help: 0



What type of terminal are you using?

- 1) ANSI Standard CRT
- 2) DEC VT52
- 3) DEC VT100
- 4) Heathkit 19
- 5) Lear Siegler ADM31
- 6) PC Console
- 7) Sun Command Tool
- 8) Sun Workstation
- 9) Televideo 910
- 10) Televideo 925
- 11) Wyse Model 50
- 12) X Terminal Emulator (xterms)
- 13) CDE Terminal Emulator (dtterm)
- 14) Other

Type the number of your choice and press Return: 3

- The Solaris Installation Program -----

The Solaris installation program is divided into a series of short sections where you'll be prompted to provide information for the installation. At the end of each section, you'll be able to change the selections you've made before continuing.

About navigation...

- The mouse cannot be used
- If your keyboard does not have function keys, or they do not respond, press ESC; the legend at the bottom of the screen will change to show the ESC keys to use for navigation.

- Identify This System -----

On the next screens, you must identify this system as networked or non-networked, and set the default time zone and date/time.

If this system is networked, the software will try to find the information it needs to identify your system; you will be prompted to supply any information it cannot find.

> To begin identifying this system, press F2.

- Network Connectivity -----

Specify Yes if the system is connected to the network by one of the Solaris or vendor network/communication Ethernet cards that are supported on the Solaris CD. See your hardware documentation for the current list of supported cards.

Specify No if the system is connected to a network/communication card that is not supported on the Solaris CD, and follow the instructions listed under Help.

Networked

-----

- Yes  
 No



- Configure Multiple Network Interfaces -----

Multiple network interfaces have been detected on this system. Specify all of the network interfaces you want to configure.

Note: You must choose at least one interface to configure.

Network interfaces

-----

eri0  
 eri1

- DHCP for eri0 -----

Specify whether or not this network interface should use DHCP to configure itself. Choose Yes if DHCP is to be used, or No if the network interface is to be configured manually.

NOTE: DHCP support will not be enabled, if selected, until after the system reboots.

Use DHCP for eri0

-----

Yes  
 No

- Host Name for eri0 -----

Enter the host name which identifies this system on the network. The name must be unique within your domain; creating a duplicate host name will cause problems on the network after you install Solaris.

A host name must have at least one character; it can contain letters, digits, and minus signs (-).

Host name for eri0 **sunfire**

- IP Address for eri0 -----

Enter the Internet Protocol (IP) address for this network interface. It must be unique and follow your site's address conventions, or a system/network failure could result.

IP addresses contain four sets of numbers separated by periods (for example 129.200.9.1).

IP address for eri0 **10.0.0.45**



- Subnet for eri0 -----

On this screen you must specify whether this system is part of a subnet. If you specify incorrectly, the system will have problems communicating on the network after you reboot.

> To make a selection, use the arrow keys to highlight the option and press Return to mark it [X].

```
System part of a subnet
-----
[X] Yes
[ ] No
```

- Netmask for eri0 -----

On this screen you must specify the netmask of your subnet. A default netmask is shown; do not accept the default unless you are sure it is correct for your subnet. A netmask must contain four sets of numbers separated by periods (for example 255.255.255.0).

```
Netmask for eri0 255.0.0.0
```

- IPv6 for eri0 -----

Specify whether or not you want to enable IPv6, the next generation Internet Protocol, on this network interface. Enabling IPv6 will have no effect if this machine is not on a network that provides IPv6 service. IPv4 service will not be affected if IPv6 is enabled.

> To make a selection, use the arrow keys to highlight the option and press Return to mark it [X].

```
Enable IPv6 for eri0
-----
[ ] Yes
[X] No
```

- Set the Default Route for eri0 -----

To specify the default route, you can let the software try to detect one upon reboot, you can specify the IP address of the router, or you can choose None. Choose None if you do not have a router on your subnet.

> To make a selection, use the arrow keys to select your choice and press Return to mark it [X].

```
Default Route for eri0
-----
[ ] Detect one upon reboot
[X] Specify one
[ ] None
```



- Default Route IP Address for eri0 -----

Enter the IP address of the default route. This entry will be placed in the /etc/defaultrouter file and will be the default route after you reboot (example 129.146.89.225).

Router IP Address for eri0 10.0.0.81

- Confirm Information for eri0 -----

> Confirm the following information. If it is correct, press F2; to change any information, press F4.

Networked: Yes  
Use DHCP: No  
Host name: sunfire  
IP address: 10.0.0.45  
System part of a subnet: Yes  
Netmask: 255.0.0.0  
Enable IPv6: No  
Default Route: Specify one  
Router IP Address: 10.0.0.81

- Configure Security Policy: -----

Specify Yes if the system will use the Kerberos security mechanism.

Specify No if this system will use standard UNIX security.

Configure Kerberos Security

[ ] Yes  
[X] No

- Confirm Information -----

> Confirm the following information. If it is correct, press F2; to change any information, press F4.

Configure Kerberos Security: No



- Name Service -----

On this screen you must provide name service information. Select the name service that will be used by this system, or None if your system will either not use a name service at all, or if it will use a name service not listed here.

> To make a selection, use the arrow keys to highlight the option and press Return to mark it [X].

```
Name service
-----
[ ] NIS+
[ ] NIS
[X] DNS
[ ] LDAP
[ ] None
```

- Domain Name -----

On this screen you must specify the domain where this system resides. Make sure you enter the name correctly including capitalization and punctuation.

Domain name: **california.home**

- DNS Server Addresses -----

On this screen you must enter the IP address of your DNS server(s). You must enter at least one address. IP addresses must contain four sets of numbers separated by periods (for example 129.200.9.1).

```
Server's IP address: 10.0.0.41
Server's IP address:
Server's IP address:
```

- DNS Search List -----

On this screen you can enter a list of domains that will be searched when a DNS query is made. If you do not enter any domains, DNS will only search the DNS domain chosen for this system. The domains entered, when concatenated, may not be longer than 250 characters.

```
Search domain: california.home
Search domain:
Search domain:
Search domain:
Search domain:
Search domain:
```



- Confirm Information -----

> Confirm the following information. If it is correct, press F2;  
to change any information, press F4.

Name service: DNS  
Domain name: california.home  
Server address(es): 10.0.0.41  
Search domain(s): california.home

**NOTE:** if you don't have an DNS server on your net, it will fail to contact. Skip over and configure DNS later after setup has finished

- Name Service Error -----

Unable to find an address entry for sunfire with the specified DNS configuration.

Enter new name service information?  
-----

[ ] Yes  
[X] No

done

- Time Zone -----

On this screen you must specify your default time zone. You can specify a time zone in three ways: select one of the continents or oceans from the list, select other - offset from GMT, or other - specify time zone file.

> To make a selection, use the arrow keys to highlight the option and press Return to mark it [X].

Continents and Oceans  
-----

- [ ] Africa  
| [ ] Americas  
| [ ] Antarctica  
| [ ] Arctic Ocean  
| [ ] Asia  
| [ ] Atlantic Ocean  
| [ ] Australia  
| [X] Europe  
V [ ] Indian Ocean





- Country or Region -----

> To make a selection, use the arrow keys to highlight the option and press Return to mark it [X].

```
      Countries and Regions
-----
^   [ ] Belarus
|   [ ] Belgium
|   [ ] Bosnia & Herzegovina
|   [ ] Britain (UK)
|   [ ] Bulgaria
|   [ ] Croatia
|   [ ] Czech Republic
|   [ ] Denmark
|   [ ] Estonia
|   [X] Europe - Central
|   [ ] Europe - Eastern
|   [ ] Europe - Western
V   [ ] Finland
```

- Date and Time -----

> Accept the default date and time or enter new values.

Date and time: 2006-02-25 16:18

```
Year   (4 digits) : 2006
Month  (1-12)     : 02
Day    (1-31)     : 25
Hour   (0-23)     : 16
Minute (0-59)     : 18
```

- Confirm Information -----

> Confirm the following information. If it is correct, press F2; to change any information, press F4.

```
Time zone: MET
Date and time: 2006-02-25 16:18:00
```

- Root Password -----

Please enter the root password for this system.

The root password may contain alphanumeric and special characters. For security, the password will not be displayed on the screen as you type it.

> If you do not want a root password, leave both entries blank.

```
Root password: *****
Root password: *****
```



```
System identification is completed.
System identification complete.
Starting Solaris installation program...
Executing JumpStart preinstall phase...
Searching for SolStart directory...
Checking rules.ok file...
Using begin script: install_begin
Using finish script: patch_finish
Executing SolStart preinstall phase...
Executing begin script "install_begin"...
Begin script install_begin execution completed.
```

- Solaris Interactive Installation -----

On the following screens, you can accept the defaults or you can customize how Solaris software will be installed by:

- Selecting the type of Solaris software to install
- Selecting disks to hold software you've selected
- Selecting unbundled products to be installed with Solaris
- Specifying how file systems are laid out on the disks

After completing these tasks, a summary of your selections (called a profile) will be displayed.

There are two ways to install your Solaris software:

- "Standard" installs your system from a standard Solaris Distribution. Selecting "Standard" allows you to choose between initial install and upgrade, if your system is upgradable.
- "Flash" installs your system from one or more Flash Archives.

- Eject a CD/DVD Automatically? -----

During the installation of Solaris software, you may be using one or more CDs/DVDs. You can choose to have the system eject each CD/DVD automatically after it is installed or you can choose to manually eject each CD/DVD.

```
[X] Automatically eject CD/DVD
[ ] Manually eject CD/DVD
```

- Reboot After Installation? -----

After Solaris software is installed, the system must be rebooted. You can choose to have the system automatically reboot, or you can choose to manually reboot the system if you want to run scripts or do other customizations before the reboot. You can manually reboot a system by using the reboot(1M) command.

```
[X] Auto Reboot
[ ] Manual Reboot
```



- Solaris Interactive Installation -----

This system is upgradable, so there are two ways to install the Solaris software.

The Upgrade option updates the Solaris software to the new release, saving as many modifications to the previous version of Solaris software as possible. Back up the system before using the Upgrade option.

The **Initial option** overwrites the system disks with the new version of Solaris software. This option allows you to preserve any existing file systems. Back up any modifications made to the previous version of Solaris software before starting the Initial option.

After you select an option and complete the tasks that follow, a summary of your actions will be displayed.

- Initializing -----

The system is being initialized.

License -----

- Sun Microsystems, Inc. ("Sun")  
SOFTWARE LICENSE AGREEMENT  
|  
| READ THE TERMS OF THIS AGREEMENT ("AGREEMENT") CAREFULLY BEFORE  
| OPENING SOFTWARE MEDIA PACKAGE. BY OPENING SOFTWARE MEDIA  
| PACKAGE, YOU AGREE TO THE TERMS OF THIS AGREEMENT. IF YOU ARE  
| ACCESSING SOFTWARE ELECTRONICALLY, INDICATE YOUR ACCEPTANCE OF  
| THESE TERMS BY SELECTING THE "ACCEPT" (OR EQUIVALENT) BUTTON AT  
| THE END OF THIS AGREEMENT. IF YOU DO NOT AGREE TO ALL OF THE  
| TERMS, PROMPTLY RETURN THE UNUSED SOFTWARE TO YOUR PLACE OF  
| PURCHASE FOR A REFUND OR, IF SOFTWARE IS ACCESSED ELECTRONICALLY,  
| SELECT THE "DECLINE" (OR EQUIVALENT) BUTTON AT THE END OF THIS  
| AGREEMENT. IF YOU HAVE SEPARATELY AGREED TO LICENSE TERMS  
| ("MASTER TERMS") FOR YOUR LICENSE TO THIS SOFTWARE, THEN SECTIONS  
| 1-6 OF THIS AGREEMENT ("SUPPLEMENTAL LICENSE TERMS") SHALL  
| SUPPLEMENT AND SUPERSEDE THE MASTER TERMS IN RELATION TO THIS  
| SOFTWARE.  
.....snip snip snip.....

Accept the license

- Select Geographic Regions -----

Select the geographic regions for which support should be installed.

- > [ ] Asia
- > [ ] Eastern Europe
- > [ ] Northern Europe
- > [ ] Northern Africa
- > [ ] Middle East



```
> [ ] Southern Europe
> [ ] South America
> [ ] Central America
V [/] Central Europe
  [ ] Austria (ISO8859-1)
  [ ] Czech Republic (ISO8859-2)
  [ ] French
  [X] German
  [ ] Germany (ISO8859-1)
  [ ] Hungary (ISO8859-2)
  [ ] Poland (ISO8859-2)
```

- Select System Locale -----

Select the initial locale to be used after the system has been installed.

```
[X] POSIX C ( C )
```

- Select Products -----

Select the products you would like to install.

```
> [ ] Solaris 10 Extra Value Software..... 0.00 MB
> [ ] Solaris 10 Documentation..... 0.00 MB
> [ ] Java Enterprise System..... 0.00 MB
> [ ] Solaris Software Companion..... 0.00 MB
```

- Additional Products -----

To scan for additional products, select the location you wish to scan. Products found at the selected location that are in a Web Start Ready install form will be added to the Products list.

Web Start Ready product scan location:

```
[X] None
[ ] CD/DVD
[ ] Network File System
```

Select the Solaris software to install on the system.

NOTE: After selecting a software group, you can add or remove software by customizing it. However, this requires understanding of software dependencies and how Solaris software is packaged.

```
[ ] Entire Distribution plus OEM support ..... 5281.00 MB
[X] Entire Distribution ..... 5234.00 MB
[ ] Developer System Support ..... 5098.00 MB
[ ] End User System Support ..... 4037.00 MB
[ ] Core System Support ..... 807.00 MB
[ ] Reduced Networking Core System Support ..... 765.00 MB
```



- Select Disks -----

On this screen you must select the disks for installing Solaris software. Start by looking at the Suggested Minimum field; this value is the approximate space needed to install the software you've selected. Keep selecting disks until the Total Selected value exceeds the Suggested Minimum value.

NOTE: \*\* denotes current boot disk

Disk Device	Available Space
[ - ] c1t0d0	0 MB
[ X ] ** c1t1d0	34730 MB

Total Selected: 34730 MB  
Suggested Minimum: 4014 MB

- Preserve Data? -----

Do you want to preserve existing data? At least one of the disks you've selected for installing Solaris software has file systems or unnamed slices that you may want to save.

- Automatically Layout File Systems? -----

Do you want to use auto-layout to automatically layout file systems? Manually laying out file systems requires advanced system administration skills.

- Automatically Layout File Systems -----

On this screen you must select all the file systems you want auto-layout to create, or accept the default file systems shown.

NOTE: For small disks, it may be necessary for auto-layout to break up some of the file systems you request into smaller file systems to fit the available disk space. So, after auto-layout completes, you may find file systems in the layout that you did not select from the list below.

File Systems for Auto-layout

[ X ]	/
[ ]	/opt
[ ]	/usr
[ ]	/usr/openwin
[ ]	/var
[ X ]	swap

- File System and Disk Layout -----

The summary below is your current file system and disk layout, based on the information you've supplied.

NOTE: If you choose to customize, you should understand file systems, their intended purpose on the disk, and how changing them may affect the operation of the system.

File sys/Mnt point	Disk/Slice		Size
/	clt1d0s0	4903	MB
swap	clt1d0s1	512	MB
overlap	clt1d0s2	34730	MB
/export/home	clt1d0s7	29314	MB

- Mount Remote File Systems? -----

Do you want to mount software from a remote file server? This may be necessary if you had to remove software because of disk space problems

- Profile -----

The information shown below is your profile for installing Solaris software. It reflects the choices you've made on previous screens.

=====

Installation Option: Initial  
Boot Device: clt1d0  
Client Services: None

Locales: German  
System Locale: C ( C )

Software: Solaris 10, Entire Distribution

File System and Disk Layout: /                   clt1d0s0 4903 MB  
  swap                   clt1d0s1 512 MB  
  /export/home       clt1d0s7 29314 MB

-----  
Esc-2\_Begin Installation    F4\_Change    F5\_Exit    F6\_Help

Preparing system for Solaris install

Configuring disk (clt1d0)

- Creating Solaris disk label (VTOC)

Creating and checking UFS file systems

- Creating / (clt1d0s0)

Solaris Initial Install

MBytes Installed: 13.43  
MBytes Remaining: 3351.24

Installing: Core Solaris, (Root)



```
  \
  |           |           |           |           |
  0          20         40         60         80        100
```

```
Executing last command: boot
Boot device: /pci@1f,0/pci@1/scsi@8/disk@1,0:a File and args:
SunOS Release 5.10 Version Generic_118822-25 64-bit
Copyright 1983-2005 Sun Microsystems, Inc. All rights reserved.
Use is subject to license terms.
Hostname: sunfire
Configuring devices.
SUNW,eri0 : 100 Mbps full duplex link up
Loading smf(5) service descriptions: 89/89
checking ufs filesystems
/dev/rdisk/clt1d0s7: is logging.
Creating new rsa public/private host key pair
Creating new dsa public/private host key pair
```

This system is configured with NFS version 4, which uses a domain name that is automatically derived from the system's name services. The derived domain name is sufficient for most configurations. In a few cases, mounts that cross different domains might cause files to be owned by "nobody" due to the lack of a common domain name.

Do you need to override the system's default NFS version 4 domain name (yes/no) ? [no] : **yes**

Enter the domain to be used as the NFS version 4 domain name.

NFS version 4 domain name []: **california.home**

Starting Solaris Install Launcher in Command Line Mode.

Please specify the media from which you will install Solaris 10 Software 2 for SPARC Platforms.

Alternatively, choose the selection for "Skip" to skip this disc and go on to the next one.

Media:

1. CD/DVD
2. Network File System
3. Skip

Media [1]:

Please insert the CD/DVD for Solaris 10 Software 2 for SPARC Platforms.

After you insert the disc, please press Enter.

Enter S to skip this disc and go on to the next one.

To select a different media, enter B to go Back.

[]



Reading Solaris 10 Software 2 for SPARC Platforms.... \

Launching installer for Solaris 10 Software 2 for SPARC Platforms. Please Wait...

The following items will be installed:

Product: Solaris 10 packages (part 2)  
Location: /  
Size: 1226.09 MB

-----  
Solaris 10 packages (part 2) 1226.09 MB

Ready to Install

1. Install Now
2. Start Over
3. Exit Installation

What would you like to do [1]?

Solaris 10 packages (part 2)

| -1%-----25%-----50%-----75%-----100%|

Pausing for 30 seconds at the "Summary" screen. The wizard will continue to the next step unless you select "Pause". Enter 'p' to pause. Enter 'c' to continue. [c]

Please specify the media from which you will install Solaris 10 Software 3 for SPARC Platforms.

Alternatively, choose the selection for "Skip" to skip this disc and go on to the next one.

Media:

1. CD/DVD
2. Network File System
3. Skip

Media [1]:

Please insert the CD/DVD for Solaris 10 Software 3 for SPARC Platforms.

After you insert the disc, please press Enter.

Enter S to skip this disc and go on to the next one.

To select a different media, enter B to go Back.

[ ]

Reading Solaris 10 Software 3 for SPARC Platforms.... \





Launching installer for Solaris 10 Software 3 for SPARC Platforms. Please Wait...

Java Accessibility Bridge for GNOME loaded.

The following items will be installed:

Product: Solaris 10 packages (part 3)  
Location: /  
Size: 601.5 MB

-----  
Solaris 10 packages (part 3) 601.5 MB

Ready to Install

1. Install Now
2. Start Over
3. Exit Installation

What would you like to do [1]?

Solaris 10 packages (part 3)  
|-1%-----25%-----50%-----75%-----100%|

Pausing for 30 seconds at the "Summary" screen. The wizard will continue to the next step unless you select "Pause". Enter 'p' to pause. Enter 'c' to continue. [c]

Please specify the media from which you will install Solaris 10 Software 4 for SPARC Platforms.

Alternatively, choose the selection for "Skip" to skip this disc and go on to the next one.

Media:

1. CD/DVD
2. Network File System
3. Skip

Media [1]:

Please insert the CD/DVD for Solaris 10 Software 4 for SPARC Platforms.

After you insert the disc, please press Enter.

Enter S to skip this disc and go on to the next one.  
To select a different media, enter B to go Back.

[ ]

Reading Solaris 10 Software 4 for SPARC Platforms....



Launching installer for Solaris 10 Software 4 for SPARC Platforms. Please Wait...

Java Accessibility Bridge for GNOME loaded.

The following items will be installed:

Product: Solaris 10 packages (part 4)  
Location: /  
Size: 931.07 MB

-----  
Solaris 10 packages (part 4) 931.07 MB

Ready to Install

1. Install Now
2. Start Over
3. Exit Installation

What would you like to do [1]?

Solaris 10 packages (part 4)  
|-1%-----25%-----50%-----75%-----100%|

Pausing for 30 seconds at the "Summary" screen. The wizard will continue to the next step unless you select "Pause". Enter 'p' to pause. Enter 'c' to continue. [c]

Please specify the media from which you will install Solaris 10 Languages for SPARC Platforms.

Alternatively, choose the selection for "Skip" to skip this disc and go on to the next one.

Media:

1. CD/DVD
2. Network File System
3. Skip

Media [1]:

Please insert the CD/DVD for Solaris 10 Languages for SPARC Platforms.

After you insert the disc, please press Enter.

Enter S to skip this disc and go on to the next one.  
To select a different media, enter B to go Back.

[ ]

Reading Solaris 10 Languages for SPARC Platforms....

Launching installer for Solaris 10 Languages for SPARC Platforms. Please Wait...



Java Accessibility Bridge for GNOME loaded.

The following items will be installed:

Product: Solaris 10 German Localization  
Location: /usr  
Size: 53.57 MB

-----  
Solaris 10 German Common Localization      53.57 MB

Ready to Install

1. Install Now
2. Start Over
3. Exit Installation

What would you like to do [1]?

Installing Solaris 10 German Localization

| -1%-----25%-----50%-----75%-----100%|

Pausing for 30 seconds at the "Summary" screen. The wizard will continue to the next step unless you select "Pause". Enter 'p' to pause. Enter 'c' to continue. [c]

Launching installer. Please Wait...

Java Accessibility Bridge for GNOME loaded.

Installing Additional Software

| -1%-----25%-----50%-----75%-----100%|

Pausing for 30 seconds at the "Summary" screen. The wizard will continue to the next step unless you select "Pause". Enter 'p' to pause. Enter 'c' to continue. [c]

Pausing for 90 seconds at the "Reboot" screen. The wizard will continue to the next step unless you select "Pause". Enter 'p' to pause. Enter 'c' to continue. [c]

Feb 25 20:25:59 sunfire reboot: rebooted by root  
Feb 25 20:26:00 sunfire syslogd: going down on signal 15  
syncing file systems... done  
rebooting...

